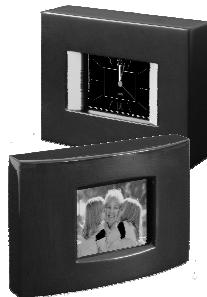


ENGLISH

TAO®

Digital Photo Clock

3.5 INCH DIGITAL PHOTO FRAME
DIGITAL & ANALOG ALARM CLOCK



The Components	■
Preparation	■
Menus and Settings	■
Loading Photos (PC)	■
Loading Photos (Mac)	■

FOR USE WITH MODELS SKU#
83003 & 83004

Basic

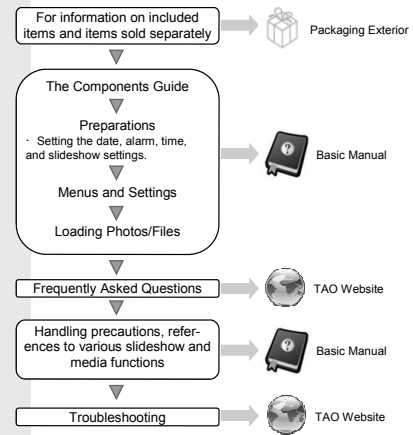
Clock User Guide

Please Read This First

This guide explains how to prepare the Digital Photo Clock and use its basic features

Flowchart and Reference Guides

The following guides and support are available. Refer to them as necessary according to the flowchart below:



www.taoelectronics.com

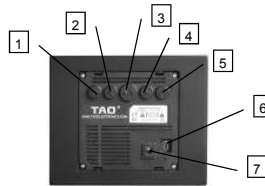
The Components Guide

■ Front View



A. Display Screen

■ Back View



1. On/Off Button
2. Next Button
3. Play Button
4. Previous Button
5. Tool Button
6. USB Slot
7. A/C Adapter Slot

The Components Guide

Turning the Power On/Off

■ Turning the Digital Photo Clock On

1. Connect the AC adapter to a power source.
2. Press the On/Off button (back of the frame).

■ Turning the Digital Photo Clock Off

1. Press and hold the on/off button for 5 seconds.

■ Turning the Alarm Off.

1. When the alarm sounds, press the Play, Next, Previous, or Tool button to turn it off.

■ Main Menu



Press the Tool button on the back of your frame to enter the Main Menu, and press Next, Previous to select a mode, and press the Play button to enter the selected mode.
Photo: Selects Photo Mode.
Clock Calendar: Selects Clock and Calendar Modes
Setup & Alarm: Enters the Setup Menu.

First Time Settings

■ Preparing the Digital Photo Clock



1. Press the Tool Button to enter the Main Menu.
2. Use the Previous and Next buttons to select "Setup & Alarm."
3. Press the Play button to select.

- (1) Adjusts the date.
- (2) Toggles between 12 and 24 hour time display.
- (3) Adjusts the time.
- (4) Adjusts the Alarm time.
- (5) Toggles the Alarm On or Off.
- (6) Sets the Slide Show Speed.
 - F - 3 seconds
 - M - 5 seconds
 - S - 8 seconds
- (7) Toggles the display options.
 - Hide - Displays only the photo.
 - Date - Displays the date and the photo.
 - Clock - Displays the time and the photo.
 - All - Displays the date, time, and photo.
- (8) Adjusts the Brightness of Images
- (9) Toggles the Auto On/Off power saving feature.

Preparation

■ Setting the Date



1. Press the Tool Button to enter the Main Menu.
2. Use the Previous and Next buttons to select "Setup & Alarm."
3. Press the Play button to select.



1. Press the Play button to select the Date.
2. Press the Previous and Next buttons to cycle through the months, and press the Play button to confirm. This will highlight the day.
3. Press the Previous and Next buttons to cycle through the days, and press the Play button to confirm. This will highlight the year.
4. Press the Previous and Next buttons to cycle through the years, and press the Play button to confirm.

■ Setting 12 hour or 24 hour Time



1. Press the Tool Button to enter the Main Menu.
2. Use the Previous and Next buttons to select "Setup & Alarm."
3. Press the Play button to select.



1. Press the Next button to highlight "Time Base", and press the Play button to select.
2. Press the Previous and Next buttons to toggle between 12 hour display, and 24 hour display.
3. Press the Play button to confirm.

■ Setting the Time



1. Press the Tool Button to enter the Main Menu.
2. Use the Previous and Next buttons to select "Setup & Alarm."
3. Press the Play button to select.



1. Press the Next button to highlight "Time", and press the Play button to select.
2. Press the Previous and Next buttons to cycle through the hours, and press the Play button to confirm. This will highlight the minutes.
3. Press the Previous and Next buttons to cycle through the minutes, and press the Play button to confirm. This will highlight the seconds.
4. Press the Previous and Next buttons to cycle through the seconds, and press the Play button to confirm.

■ Setting the AIM TIME



1. Press the Tool Button to enter the Main Menu.
2. Use the Previous and Next buttons to select "Setup & Alarm."
3. Press the Play button to select.



1. Press the Next button to highlight "AIM TIME", and press the Play button to select.
2. Press the Previous and Next buttons to cycle through the hours, and press the Play button to confirm. This will highlight the minutes.
3. Press the Previous and Next buttons to cycle through the minutes, and press the Play button to confirm. This will highlight the seconds.
4. Press the Previous and Next buttons to cycle through the seconds, and press the Play button to confirm.

Menus and Settings

■ Toggling the Alarm ON or OFF



1. Press the Tool Button to enter the Main Menu.
2. Use the Previous and Next buttons to select "Setup & Alarm."
3. Press the Play button to select.



1. Press the Play button to select "ALM".
2. Press the Previous and Next buttons to toggle between ON/OFF, and press the Play button to confirm.

■ Setting the Slide Show Transition Speed



1. Press the Tool Button to enter the Main Menu.
2. Use the Previous and Next buttons to select "Setup & Alarm."
3. Press the Play button to select.



1. Press the Play button to select "Slide Speed".
2. Press the Previous and Next buttons to toggle between F/M/S, and press the Play button to confirm.

- F (Fast) 3 seconds between photos.
- M (Medium) 5 seconds between photos.
- S (Slow) 8 seconds between photos.

■ Setting the Main Display Mode



1. Press the Tool Button to enter the Main Menu.
2. Use the Previous and Next buttons to select "Setup & Alarm."
3. Press the Play button to select.



1. Press the Play button to select "Show".
2. Press the Previous and Next buttons to toggle between Hide/Date/Clock/All and press the Play button to confirm.

- Hide Shows Photos only.
- Date Shows Photos, with date overlay.
- Clock Shows Photos, and time overlay.
- All Shows Photos with date & time.

■ Setting the Brightness



1. Press the Tool Button to enter the Main Menu.
2. Use the Previous and Next buttons to select "Setup & Alarm."
3. Press the Play button to select.



1. Press the Play button to select "Brightness".
2. Press the Previous and Next buttons to adjust brightness within 17 grades (MIN, 2, 3, 4, ..., 15, 16, MAX) and press the Play button to confirm.

- MIN (Minimum) Darkness of image.
- MAX (Maximum) Most brightness of image.

■ Setting the AUTO ON-OFF Mode



1. Press the Tool Button to enter the Main Menu.
2. Use the Previous and Next buttons to select "Setup & Alarm."
3. Press the Play button to select.



1. Press the Play button to select "AUTO ON-OFF".
2. Press the Previous and Next buttons to toggle between YES/NO, and press the play button to confirm.

- YES Enable power saving feature (Auto turn-off at 00:00AM, and turn-on at 06:00AM)
- NO Disable power saving feature.

Clock and Calendar Modes

The Digital Photo Clock not only serves as a digital photo frame, but can also be used as a standard analog or digital clock.



1. Press the Tool Button to enter the Main Menu.
2. Use the Previous and Next buttons to select "Clock Calendar," and press the Play button to select.
3. Use the Previous and Next buttons to select the desired mode, and press the Play button to select.
4. Once a specific mode is displayed, press the Previous and Next buttons to cycle through modes.



www.taoelectronics.com

TAO®

Photo Mode



1. Press the Tool Button to enter the Main Menu.
2. Use the Previous and Next buttons to select "Photo," and press the Play button to select.
3. Press the Play button to select.



This mode displays a grid of photos in clusters of 4.

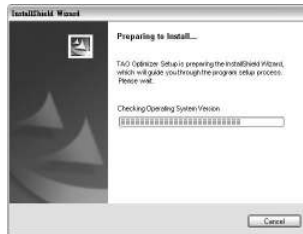
You can view individual photos by pressing the Play button, and press Play again to begin a Slide Show.

TAO®

©2008 TAO Electronics, Inc.

Loading Photos (PC)

■ Installation (PC)

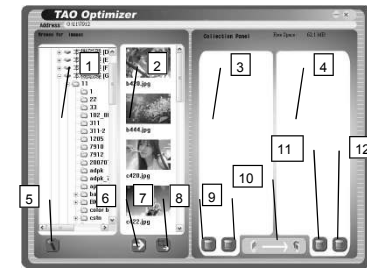


1. Turn off the device and connect it to your PC via USB cable.
2. Install Photo Optimizer from the CD-ROM.
3. After the Installation is complete, connect your clock to your computer using the USB cable provided.
4. Turn the clock ON.
5. Windows will begin the installation of your new hardware.
6. Once the Hardware Installation is complete, double click the "TAO Photo Optimizer" icon on your desktop to launch the program.

For the latest software updates, visit
www.taoelectronics.com

Loading Photos (PC)

■ Photo Optimizer Screen (PC)



- (1) Desktop, hard drive, and folder directory.
- (2) Photos inside selected folder.
- (3) Collection Panel (photos to be transferred)
- (4) Internal Memory Panel (photos on clock)
- (5) Settings Button.
- (6) Add Button.
- (7) Crop Button.
- (8) Remove selected photo from Collection Panel.
- (9) Remove all photos from Collection Panel.
- (10) Transfer Button.
- (11) Delete selected photo from clock.
- (12) Delete all photos from clock.

■ **Transferring Photos (PC)**



1. Connect the clock to the PC via USB cord, and power on the unit. Double click the TAO Optimizer icon on the Desktop to launch the software.
2. Double click folders on the leftmost panel to view containing folders. Single click the name of the folder to view contents.
3. Single click a photo in the second panel, and click the Add button to add the photo to the Collection Panel. Hold down the Ctrl button on your keyboard to select multiple photos.
4. Click the Transfer button to transfer all photos to the clock.
5. **Do not disconnect the cord while the photos are transferring to the clock.**
6. **Disconnect the clock from the computer, and turn the unit off before using.**

■ **Removing/Deleting Photos (PC)**



1. To remove a photo from the Collection Panel, select a photo in the Collection Panel, and click the left Trash icon, beneath the Collection Panel. *You can remove multiple photos by holding the Ctrl button while clicking.*
2. To clear the Collection Panel, click on the right Trash icon, beneath the Collection Panel.
3. To delete a photo from the clock, select a photo in the rightmost panel, and click the left Trash icon, Internal Memory Panel. *You can remove multiple photos by holding the Ctrl button while clicking.*
4. To delete all photos from the clock, click the right Trash icon, beneath the Internal Memory Panel.

■ Cropping/Editing Photos (PC)



1. After selecting a photo to transfer to the Collection Panel, you can click the Crop Button to crop and edit the photo.
2. Click and hold the corners of the thin rectangle overlapping the photo to select the crop area. The area inside of the rectangle will be visible on the frame.
3. Drag the sliders on the Brightness and Contrast bars to adjust the photo visibility.
4. Click the Done button to transfer the selected area to the Collection Panel.

Loading Photos (PC)

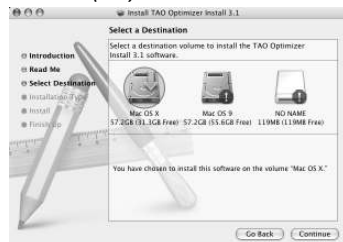
■ Settings (PC)



1. Click the Settings Button to open the Settings Menu.
2. "Crop to fit display" will crop photos to fill the clock's display screen. This option will automatically trim edges if the photo ratio is different than the screen ratio.
3. "Show whole image" will add black borders to preserve original image ratio.
4. Click and hold the slide bar under "Compression Ratio", and drag to the desired compression level. High compression allows for more photos to be stored on the frame, while low compression attempts to preserve more of the original photo quality.

Loading Photos (Mac)

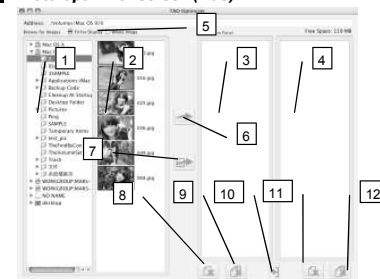
Installation (Mac)



1. Turn the device off, and connect it to your Mac via USB cable.
2. Double click the TAO Optimizer.dmg file, to mount the device to your desktop.
3. Double click the TAO Optimizer icon on your desktop, and open the installer..
4. Follow the directions of the installer, and click Finish when done.
5. Turn the clock ON.
6. Double click the "TAO Photo Optimizer" icon on your desktop to launch the program.

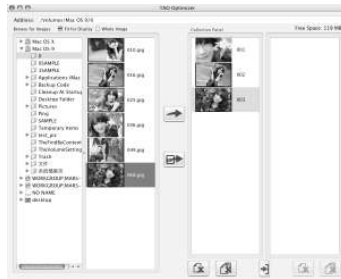
For the latest software updates, visit
www.taoelectronics.com

Photo Optimizer Screen (Mac)



- (1) Desktop, hard drive, and folder.
- (2) Photos inside selected folder.
- (3) Collection Panel (photos to be transferred)
- (4) Internal Memory Panel (photos on clock)
- (5) Image Ratio Buttons
- (6) Add Photo Button.
- (7) Crop Button.
- (8) Remove selected photo from Collection Panel.
- (9) Remove all photos from Collection Panel.
- (10) Transfer Collection Panel photos to clock.
- (11) Delete selected photo from clock.
- (12) Delete all photos from clock.

■ Transferring Photos (Mac)



1. Connect the clock to the Mac via USB cord, and power on the unit. Double click the TAO Optimizer icon on the Desktop to launch the software.
2. Click the solid arrows in the leftmost panel to view containing folders. Single click the name of the folder to view contents.
3. Single click a photo in the second panel, and click the Add button to add the photo to the Collection Panel.
4. Click the Transfer button to transfer all photos to the clock.
5. **Do not disconnect the cord while the photos are Uploading.**
6. **Disconnect the clock from the computer, and turn the unit off before using.**

Loading Photos (Mac)

■ Removing/Deleting Photos



1. To remove a photo from the Collection Panel, select a photo in the Collection Panel, and click the left Trash icon, beneath the Collection Panel.
2. To clear the Collection Panel, click on the right Trash icon, beneath the Collection Panel.
3. To delete a photo from the clock, select a photo in the rightmost panel, and click the left Trash icon, Internal Memory Panel.
4. To delete all photos from the clock, click the right Trash icon, beneath the Internal Memory Panel.

■ Cropping/Editing Photos



1. After selecting a photo to transfer to the Collection Panel, you can click the Crop Button to crop and edit the photo.
2. Click and hold the corners of the thin rectangle overlapping the photo to select the crop area. The area inside of the rectangle will be visible on the frame.
3. Drag the sliders on the Brightness and Contrast bars to adjust the photo visibility.
4. Click the Done button to transfer the selected area to the Collection Panel.
5. Click the Image Ratio buttons to toggle between fit-to-screen cropping, and original image ratio preservation.

Loading Photos (Mac)

Safety Precautions

IMPORTANT INFORMATION REQUIRED BY THE FCC

This device complies with Part 15 of the FCC Rules. Operation is subject to the following two conditions: (1) this device may not cause harmful interference; and (2) this device must accept any interference received, including interference that may cause undesirable operation.

NOTE: This equipment has been tested and found to comply with the limits for a Class B digital device, pursuant to Part 15 of the FCC Rules. These limits are designed to provide reasonable protection against harmful interference in a residential installation. This equipment generates, uses, and can radiate radio frequency energy and, if not installed and used in accordance with the instructions, may cause harmful interference to radio reception, which can be determined by turning the equipment off and on. The user is encouraged to try to correct the interference by one or more of the following measures:

- Reorient or relocate the receiving antenna.
- Increase the separation between the equipment and receiver.
- Connect the equipment into an outlet on a circuit different from that to which the receiver is connected.
- Consult the dealer or an experienced radio/TV technician for help.

WARNING-- To reduce the risk of fire, electrical shock, or serious personal injury:

- Keep the product and all its parts and accessories out of the reach of small children.
- Do not expose product to water or other liquids.
- Do not leave the unit unattended while it is in use. Always unplug the AC Power Adapter from the electrical outlet when the unit is not in use.
- Do not place this product in a built-in installation such as a bookcase or rack unless proper ventilation is provided or unless advised in the manufacturer's instructions.
- Only operate this product from the type of power source indicated on the marking label. If you are not sure of the type of power supply to your home, consult your product dealer or local power company.
- Do not open the case; there are no user-serviceable parts inside. Opening the case will void your warranty.
- Do not use attachments not recommended or sold by the product manufacturer.
- Never operate this product if it is not working properly, has been dropped, damaged, or exposed to water or other liquids. Do not attempt to examine or repair this product yourself; take the product to an electronics repair shop of your choice for inspection and repair.

CAUTION-- To reduce the risk of personal injury or product/property damage:

- Do not expose the product to extreme temperature changes, moisture/high humidity, or dust/dirt. Slots and openings in the cabinet are provided for ventilation and to ensure reliable operation of the product and to protect it from overheating; do not block or cover these openings by placing the product on a bed, sofa, rug, or other similar surface.
- Do not clean product with thinner, alcohol, or benzene.
- Do not leave the unit exposed to direct sunlight.
- Do not drop the product or subject it to strong shocks.
- Do not use this product outdoors; it is intended for indoor use only.

The screen becomes warm during normal operation; this is not a malfunction.
To clean, use a soft, non-abrasive cloth such as the camera lens cloth to clean the LCD screen.
If you use an LCD Cleaning Kit, do not apply the cleaning liquid directly to the LCD screen. Apply cleaning liquid to the cleaning cloth first, and then clean the screen.

Contact

■ Contact

Technical Support
US & Canada
Email: support@taoelectronics.com
Toll-Free: (888) 920-0829
Web: www.taoelectronics.com

Customer Service
US & Canada
Email: support@taoelectronics.com
Toll-Free: (888) 920-0829
Web: www.taoelectronics.com

International Support and Customer Service
Email: support@taoelectronics.com
Web: www.taoelectronics.com

Manufactured and distributed by:
TAO Electronics, Inc.
19843 Nordhoff Street, #3B
Northridge, CA 91324
Phone: (818) 700-9047
Fax: (818) 700-9094

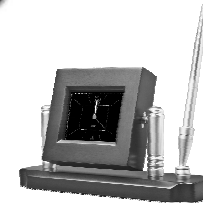


Other Products



digital photo **Clock Radio**

Digital Photo Frame, Radio, and Clock
128 MB Internal Memory
7" Display
2 different models



digital photo **Penholder**

Digital Photo Frame & Clock Viewer
128 MB Internal Memory
3.5" Display
2 different models



digital photo **Keychain**

Digital Photo Keychain
Holds 31 photos
1.5" Display OLED
Rechargeable Lithium Battery
6 different models



digital photo **Frame**

Digital Photo Frame (8x10 style)
256MB Internal Memory
8" Display
17 different models

Index

1-10	pg. #	O	pg. #
12/24 hour time	7	Off	4
A		On	4
Alarm ON/OFF	4,10	Other Products	20
Alarm	9		
Auto On/OFF	5,14	P	
B		PC Software	17-22
Brightness	13	Photo Screen	16
Buttons	3	Power	4
		Preparation	5
C		R	
Calendar Settings	6	Removing Photos	20,26
Clock/Calendar	15		
Compatible Files	16	S	
Components	3	Safety	18
Contact	19	Support	19
Cropping Photos	21,27	T	
D		Tech Support	19
Date	6	Thumbnail View	16
Deleting Photos	20,26	Time Settings	7
Display Setting	11	Time	8
E		W	
Editing Photos	21,27	Windows Software	17-22
L			
Loading Photos	17-27		
M			
Mac Software	23-27		
Main Display Mode	12		
Main Menu	4		
Military Time	7		

www.taoelectronics.com

TAO®

TAO®